

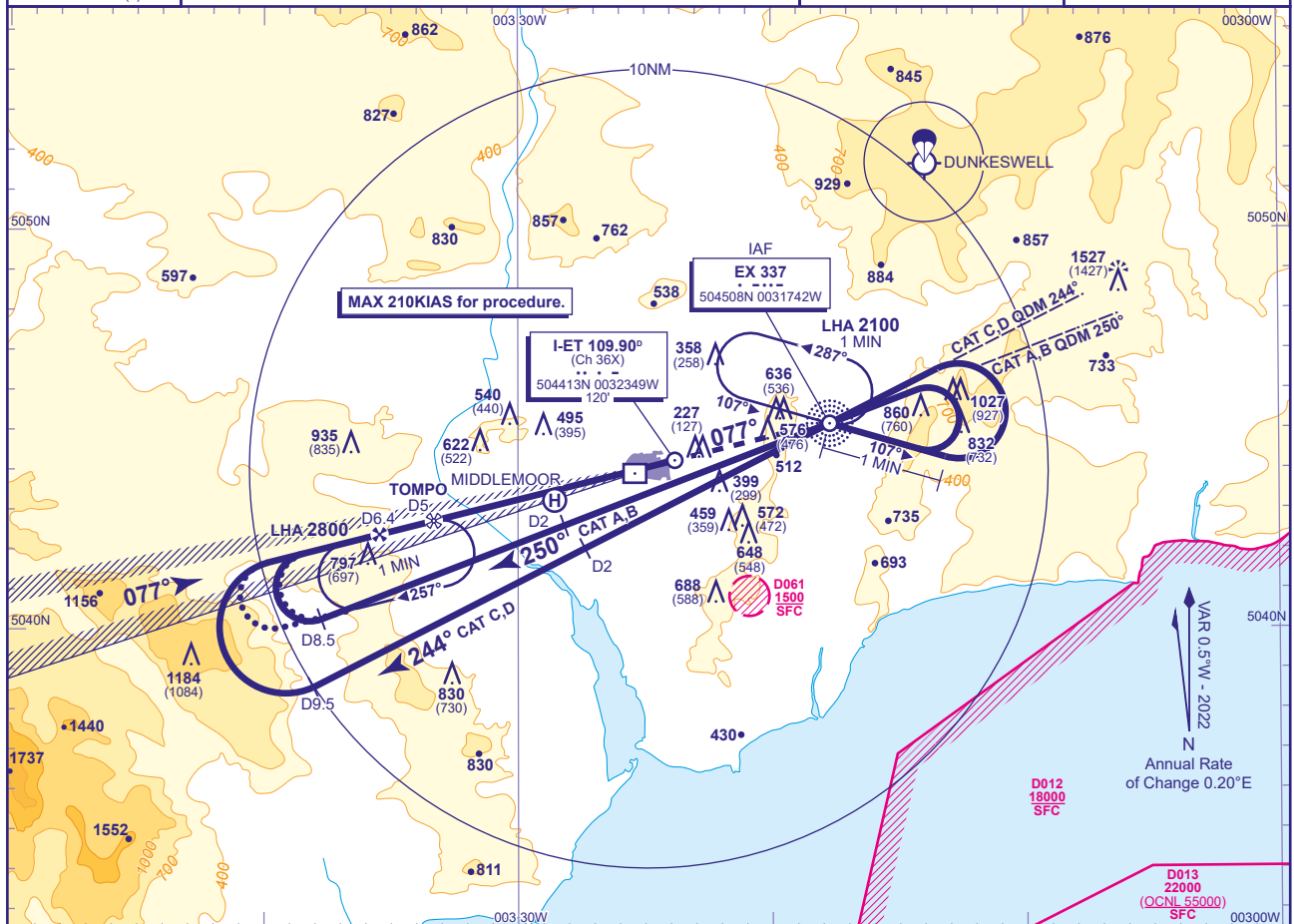
## INSTRUMENT APPROACH CHART - ICAO

EXETER

ILS/DME/NDB(L)  
RWY 08  
(ACFT CAT A,B,C,D)

MSA 25NM NDB(L) EX

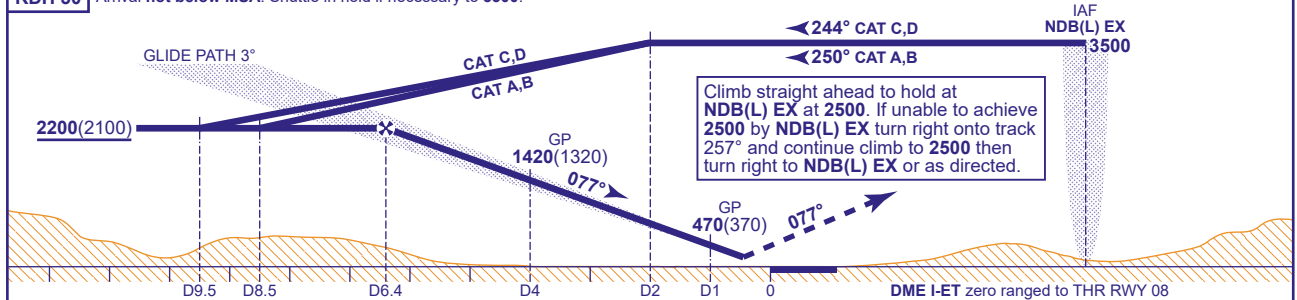
APP	128.980	EXETER APPROACH	AD ELEVATION	102
TWR	119.805	EXETER TOWER	THR ELEVATION	100
RAD	128.980, 123.580	EXETER RADAR	OBSTACLE ELEVATION	1527 AMSL (1427) (ABOVE THR)
ATIS	119.330	EXETER INFORMATION	BEARINGS ARE MAGNETIC	

TRANSITION ALTITUDE  
3000

## RECOMMENDED PROFILE GLIDE PATH 3°, 320FT/NM

DME I-ET	6	5	4	3	2	1
ALT(HGT)	2060(1960)	1740(1640)	1420(1320)	1100(1000)	790(690)	470(370)

RDH 50 Arrival not below MSA. Shuttle in hold if necessary to 3500.



Aircraft Category	A	B	C	D	Rate of descent	G/S KT	160	140	120	100	80
OCA (OCH)	CAT I	240(140)	249(149)	259(159)	272(172)	FT/MIN	850	740	640	530	420
VM(C)OCA (OCH AAL)	Total Area	700(598)	900(798)	1090(988)	1090(988)						

**ALTERNATIVE PROCEDURE (FROM TOMPO HOLD)**  
Shuttle as required in the TOMPO hold to 3000. Extend the outbound leg of the hold descending to not below 2200(2100). At I-ET DME 8.5 (CAT A,B) or I-ET DME 9.5 (CAT C,D) commence right turn to establish on the localiser then continue as for basic procedure.

**AIRCRAFT UNABLE TO RECEIVE DME I-ET**  
Advise ATC. Radar Ranges will be provided at 2NM outbound and 8.5NM or 9.5NM outbound and at 6.5NM and 4NM inbound.

**NOTE 1** Lowest altitude to commence procedure from hold after a missed approach is 2500.  
**NOTE 2** ATC will normally require aircraft to hold not lower than 3500 at NDB(L) EX or 3500 at TOMPO.  
**NOTE 3** TOMPO hold not available without DME I-ET.

CHANGE (11/23): OCA(OCH) CAT A/B/C. VM(C)OCA(OCH AAL) CAT B.